



About Mistral Corporate and Marketing Communications





About Mistral

- Communications professionals who understand the issues around climate change and the commercial opportunities they provide
- 30-year track record in environmental communications
- Renewable Energy Association member
- First to achieve PRCA Consultancy Management Standard
- Second to achieve ISO 9001 accreditation
- Network of specialists across UK and Europe



Organisations we've worked with

BERR | Department for Business
Enterprise & Regulatory Reform



envirowise } SUSTAINABLE PRACTICES
SUSTAINABLE PROFITS



TATE & LYLE
CONSISTENTLY FIRST IN RENEWABLE INGREDIENTS

DONG
energy



MID KENT
WATER



Weston Otmoor
eco-town

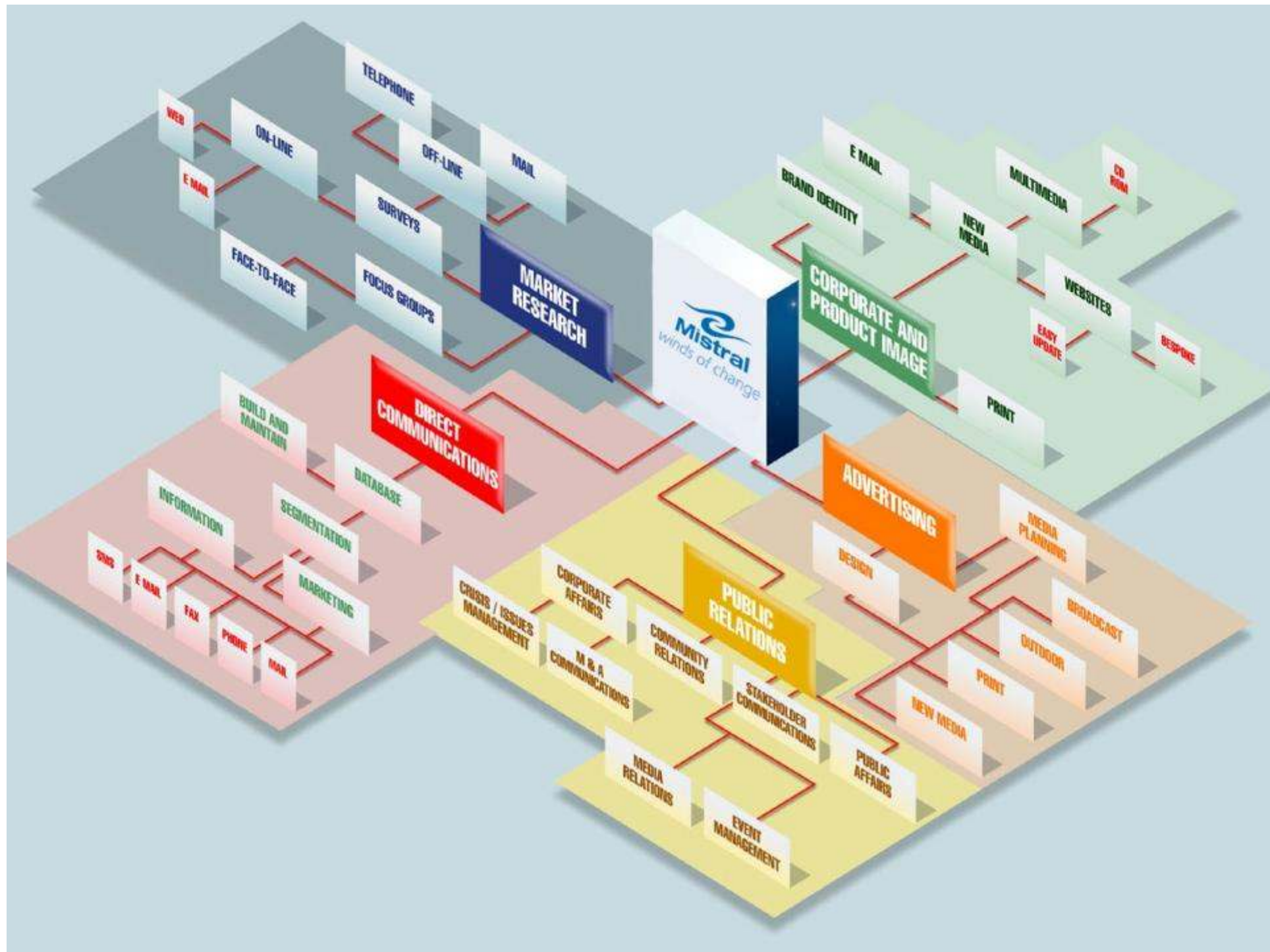
BritishGas



CABI Bioscience
nationalgrid



Mistral
winds of change





Highlights of our Envirowise coverage...

FT .com

FINANCIAL TIMES The Business

Recycling is not the answer

Recycling is not the answer... The article discusses the limitations of recycling as a primary waste management strategy, highlighting the need for more comprehensive environmental solutions.

Investors beware: an 'eco-friendly' company may be talking greenwash

GOING GREEN

The truth is in the details... Investors should be cautious of companies that use 'green' branding without substantial evidence of environmental commitment.

Guardian Unlimited



The products that never say die

The products that never say die... An article exploring the lifecycle of products and the challenges of creating truly sustainable and long-lasting goods.

BBC RADIO 5 live

uk msn

Green worker Toilet training
Is your office wasting water? Time to flush out the problem... An article about workplace water conservation, featuring a photo of a toilet.

Going green to save firms' money
A screenshot of a news article discussing how environmental initiatives can lead to cost savings for businesses.

Half of UK's top firms fail to publish plans to cut carbon emissions
A news snippet reporting on the lack of transparency from major UK corporations regarding their carbon footprint.

theguardian

Don't waste time - start recycling
A news article with a photo of a recycling bin, encouraging businesses to improve their recycling practices.

BBC NEWS

The Observer

INTERNATIONAL Herald Tribune

FINANCIAL TIMES

Mistral winds of change

More national coverage



REUTERS UK
LATEST NEWS CHINESE ANGER AND TERROR WARNINGS CLOUD OLYMPICS

Click here to take part in our user profile survey

Giant waste bin takes to London streets

Wed Feb 20, 2008 6:08am GMT

LONDON (Reuters) - Campaigners will take a giant waste bin onto the streets of London on Thursday to drive home the point of how much rubbish is generated every day.

Armed with statistics on the vast amount of waste generated and the tiny amount that is recycled, the campaign hopes to make people wake up to what they are throwing away every day.

"One Bin Day is designed to make people think about what they buy, and throw away," said Envirowise programme director Dr Martin Gibb.

Environment - Waste
2:45pm GMT

Office waste costs UK business £5bn, campaigners say

Jessica Ashrod
guardian.co.uk Thursday February 21 2008
Article history

The Telegraph BUSINESS CLUB
Safeguard your business against virus attacks

Home Strategy Money People Sales Technology Operations

One Bin Day

And waste producers are costing UK industry at least £70 million each year, says a leading business expert Envirowise. To bring the message home, Envirowise is launching the campaign with its 'One Bin Day' campaign.

As Envirowise programme director Dr Martin Gibb explains: "One Bin Day is designed to make people think about what they buy, use and throw away. As well as savings can be reduced or recycled in just one day. Much of your best makes for a big temptation to throw away valuable resources."

Paper is an obvious focus of the campaign: office workers can get through 50 sheets of paper a day, with several sheets suggesting that much of the waste produced goes straight in the bin. Overall this contributes to 25.6 million UK - 24pc of total UK waste.

By removing individual desk bins and forcing people to walk to just one central bin, Envirowise hopes to raise awareness among the nation's 25 million office workers to rethink the way they use materials and handle waste. Approximately 7.5pc of office waste is recyclable - but on average only 7.5pc reaches a recycling facility.

YouTube

Envirowise One Bin Day campaign 2008

Thursday 21st February 2008

www.envirowise.gov.uk/oneday

Faversham House coverage



NEMEX

Sharing sustainable practices at NEMEX

A lot of organisations are looking for ways to improve their environmental performance. One of the best ways to do this is to share best practice with others in the industry. NEMEX is the perfect opportunity to do this. The event will feature a number of seminars and workshops where you can learn from the experiences of other organisations. You will also have the chance to meet and talk to other industry professionals. This is a great opportunity to build relationships and share ideas. NEMEX is a must-attend event for anyone who is interested in sustainable practices.

IWEX 2008 at a glance

IWEX is part of the Sustainabilitylive! event, taking place at Birmingham NEC from 20-22 May. The other shows that make up the event are ET and ET2 (Environment, BEX (International level), and NEMEX (Energy). Highlights of the IWEX show include:

- 25k MW Renewal Drilling and Testing Championship
- Water Industry Achievement Awards 2008
- A programme of seminars and events

Additionally, Jill Craig, Chairman of the British Standards Committee, will be speaking at IWEX 2008 about drafting a Code of Practice for renewable heating systems which will include the drivers for increased use of biomass for heating in the UK, the range of systems that are currently available, the need for a standard and what the standard will and will not cover.

BEX rebrand

Visitors to Sustainabilitylive! 2008 looking to find solutions for brownfield land problems will now find it easier thanks to a newly rebranded brownfield Expo area. To help identify what's on offer, organiser FHG has renamed the International show to Brownfield Expo (BEX). BEX is aimed at land users, major contractors, local authorities and environmental consultants. Sustainabilitylive! 2008 runs from 20-22 May 2008 at the NEC Birmingham. For more details, go to www.sustainabilitylive.com

business direct

Sustainabilitylive! 2008 sharing sustainable practices

Sustainabilitylive!
20-22 May 2008
Leading the way for a sustainable future

business direct is a leading provider of business-to-business advertising and marketing solutions. We offer a range of services including print, online, and direct mail. Our solutions are designed to help businesses reach their target audience and drive sales. Sustainabilitylive! 2008 is a key event for us, and we are excited to be part of it. We will be showcasing our latest products and services, and we will be offering special discounts to our Sustainabilitylive! 2008 attendees. For more information, please contact us at info@businessdirect.co.uk.

Awards call for industry leaders

Entries for the 2008 Water Industry Achievement Awards are invited by the event's organisers - Water & Wastewater Treatment and other pollution WWT House.

The awards celebrate excellence and innovation within the water industry, and the 2008 event will celebrate an even broader range of categories than last year's event.

Water companies, sewer authorities, consultants, contractors, equipment and technology manufacturers, service providers and research organisations are invited to enter the awards and nominate their best achievements in any of the following categories:

- Health & safety
- Customer care
- Research

The awards will be presented at a celebratory dinner on May 21, 2008 at the International Convention Centre in Birmingham. Entry forms and criteria sheet are available at www.watertreatmentawards.co.uk

Sustainabilitylive! 2008 dates announced

Sustainabilitylive!
20-22 May 2008 NEC Birmingham, UK

Leading the way for a sustainable future

Sustainabilitylive! 2008 is the UK's largest annual event for environmental and sustainable solutions. The event will feature a number of seminars and workshops where you can learn from the experiences of other organisations. You will also have the chance to meet and talk to other industry professionals. This is a great opportunity to build relationships and share ideas. Sustainabilitylive! 2008 is a must-attend event for anyone who is interested in sustainable practices.



Experts sought to address IWEX

IWEX, part of Sustainabilitylive!, the UK's largest annual event for environmental and sustainable solutions, will take place at the NEC, Birmingham from May 20-22, 2008.

Organised by WET News publisher Faversham House Group (FHG), IWEX 2008 follows the resounding success of this year's event, which saw well-attended seminars, a high level conference, and quality visitors. Being part of Sustainabilitylive! also created new opportunities too, bringing together 450 exhibitors and around 7,000 visitors.

IWEX 2008 will also feature keynotes by industry leaders and public officials, as well as master classes and seminars. FHG is seeking experts and innovators to present case studies, research projects, and best practice on a variety of topics including:

- Water and energy efficiency technologies
- Urban drainage solutions
- Sludge-to-energy plant/technologies
- Reusing water systems
- Water and wastewater treatment technologies

Half-way through AMP4, many framework contracts are up for review, making IWEX 2008 the perfect place to showcase technologies.

To apply to present a seminar to delegates from across the water and wastewater spectrum, email iwex@fah-house.com or call 020 8851 7149.

Commercial papers will not be accepted. Submissions will be short-listed in October so please ensure all submission are received by October 5, 2007.





Communicating business and environmental messages in the trade press

1000 • *Environment magazine from the National Federation of Builders* ENERGY EFFICIENCY 55

BUILDERS MUST TAKE RESPONSIBILITY FOR TAKING ENERGY EFFICIENCY ACTION

The EUS Energy Action Plan, revealed in October 2006, was the latest in an increasing line of new energy targets, regulation and agreements towards increasing energy efficiency and cutting carbon emissions.

The Kyoto Agreement has been widely criticised for more stringent greenhouse gas emissions and objectives, but also for the fact that the building sector has been most responsible for the emissions that are being reduced.

According to the Action Plan, we must cut energy usage by 20% by 2020. Our responsibility to use energy efficiently will amount to more than 100 million megawatts per year by that date. The need for improved energy efficiency is being backed up by new legislation, with a capacity for savings of over 20%.

It is not only a financial incentive which will move us on. Changing behaviour and a combination of energy usage, fuel and energy prices, are the factors which will drive the industry towards energy efficiency.

There is a growing demand for new approaches to design sustainable buildings – this part of architecture and energy efficiency is an exciting area for us to move on. We are now seeing advanced natural cooling techniques, for example.

It is our responsibility to the energy efficiency community and to the public to lead the way in the development of new approaches to design sustainable buildings – this is our role as a building industry.

It is our responsibility to the energy efficiency community and to the public to lead the way in the development of new approaches to design sustainable buildings – this is our role as a building industry.

Construction can usually identify potential energy efficiency measures, but it is not always clear how to implement them. It is our responsibility to the energy efficiency community and to the public to lead the way in the development of new approaches to design sustainable buildings – this is our role as a building industry.

Construction can usually identify potential energy efficiency measures, but it is not always clear how to implement them. It is our responsibility to the energy efficiency community and to the public to lead the way in the development of new approaches to design sustainable buildings – this is our role as a building industry.

Construction can usually identify potential energy efficiency measures, but it is not always clear how to implement them. It is our responsibility to the energy efficiency community and to the public to lead the way in the development of new approaches to design sustainable buildings – this is our role as a building industry.

Construction can usually identify potential energy efficiency measures, but it is not always clear how to implement them. It is our responsibility to the energy efficiency community and to the public to lead the way in the development of new approaches to design sustainable buildings – this is our role as a building industry.

Construction can usually identify potential energy efficiency measures, but it is not always clear how to implement them. It is our responsibility to the energy efficiency community and to the public to lead the way in the development of new approaches to design sustainable buildings – this is our role as a building industry.

Construction can usually identify potential energy efficiency measures, but it is not always clear how to implement them. It is our responsibility to the energy efficiency community and to the public to lead the way in the development of new approaches to design sustainable buildings – this is our role as a building industry.

Construction can usually identify potential energy efficiency measures, but it is not always clear how to implement them. It is our responsibility to the energy efficiency community and to the public to lead the way in the development of new approaches to design sustainable buildings – this is our role as a building industry.

Construction can usually identify potential energy efficiency measures, but it is not always clear how to implement them. It is our responsibility to the energy efficiency community and to the public to lead the way in the development of new approaches to design sustainable buildings – this is our role as a building industry.

Construction can usually identify potential energy efficiency measures, but it is not always clear how to implement them. It is our responsibility to the energy efficiency community and to the public to lead the way in the development of new approaches to design sustainable buildings – this is our role as a building industry.

Construction can usually identify potential energy efficiency measures, but it is not always clear how to implement them. It is our responsibility to the energy efficiency community and to the public to lead the way in the development of new approaches to design sustainable buildings – this is our role as a building industry.

Construction can usually identify potential energy efficiency measures, but it is not always clear how to implement them. It is our responsibility to the energy efficiency community and to the public to lead the way in the development of new approaches to design sustainable buildings – this is our role as a building industry.

Construction can usually identify potential energy efficiency measures, but it is not always clear how to implement them. It is our responsibility to the energy efficiency community and to the public to lead the way in the development of new approaches to design sustainable buildings – this is our role as a building industry.

Construction can usually identify potential energy efficiency measures, but it is not always clear how to implement them. It is our responsibility to the energy efficiency community and to the public to lead the way in the development of new approaches to design sustainable buildings – this is our role as a building industry.

Construction can usually identify potential energy efficiency measures, but it is not always clear how to implement them. It is our responsibility to the energy efficiency community and to the public to lead the way in the development of new approaches to design sustainable buildings – this is our role as a building industry.

Construction can usually identify potential energy efficiency measures, but it is not always clear how to implement them. It is our responsibility to the energy efficiency community and to the public to lead the way in the development of new approaches to design sustainable buildings – this is our role as a building industry.



Waiting for regulation to catch up

THE PROGRESS OF BROWNFIELD DEVELOPMENT HAS BEEN A CHALLENGING ONE. THE GOVERNMENT HAS MADE MUCH OF THE PROGRESS OF BROWNFIELD DEVELOPMENT HAS BEEN A CHALLENGING ONE. THE GOVERNMENT HAS MADE MUCH OF THE PROGRESS OF BROWNFIELD DEVELOPMENT HAS BEEN A CHALLENGING ONE. THE GOVERNMENT HAS MADE MUCH OF THE PROGRESS OF BROWNFIELD DEVELOPMENT HAS BEEN A CHALLENGING ONE.

WFD: An unknown quantity

The Water Framework Directive (WFD) could mean changes in chemical dosing requirements. In fact, it may require you to rethink your pump manufacturer's recommendations.

For more than 20 years, the European Commission (EC) has been working to improve the quality of water resources. This has been done through a series of directives, including the Water Framework Directive (WFD).

The WFD is a comprehensive framework for the management of water resources. It sets out the objectives for water quality and quantity, and provides a framework for the implementation of these objectives.

The WFD is a comprehensive framework for the management of water resources. It sets out the objectives for water quality and quantity, and provides a framework for the implementation of these objectives.

The WFD is a comprehensive framework for the management of water resources. It sets out the objectives for water quality and quantity, and provides a framework for the implementation of these objectives.

The WFD is a comprehensive framework for the management of water resources. It sets out the objectives for water quality and quantity, and provides a framework for the implementation of these objectives.

The WFD is a comprehensive framework for the management of water resources. It sets out the objectives for water quality and quantity, and provides a framework for the implementation of these objectives.

The WFD is a comprehensive framework for the management of water resources. It sets out the objectives for water quality and quantity, and provides a framework for the implementation of these objectives.

The WFD is a comprehensive framework for the management of water resources. It sets out the objectives for water quality and quantity, and provides a framework for the implementation of these objectives.

The WFD is a comprehensive framework for the management of water resources. It sets out the objectives for water quality and quantity, and provides a framework for the implementation of these objectives.

PIPES, PIPOLINES AND FITTINGS

Moving out of the Victorian era

For Thomas Water, addressing leakage from ageing water mains has become an important as its new water meters. We take a look at how the company is spending hundreds of millions of pounds to move its capital into the 21st century.

Water is a vital resource, and its supply is under constant threat. In the Victorian era, water was often supplied through a network of pipes and fittings that were often made of cast iron and were prone to leakage.

Water is a vital resource, and its supply is under constant threat. In the Victorian era, water was often supplied through a network of pipes and fittings that were often made of cast iron and were prone to leakage.

Water is a vital resource, and its supply is under constant threat. In the Victorian era, water was often supplied through a network of pipes and fittings that were often made of cast iron and were prone to leakage.

Water is a vital resource, and its supply is under constant threat. In the Victorian era, water was often supplied through a network of pipes and fittings that were often made of cast iron and were prone to leakage.

Water is a vital resource, and its supply is under constant threat. In the Victorian era, water was often supplied through a network of pipes and fittings that were often made of cast iron and were prone to leakage.

Water is a vital resource, and its supply is under constant threat. In the Victorian era, water was often supplied through a network of pipes and fittings that were often made of cast iron and were prone to leakage.

Water is a vital resource, and its supply is under constant threat. In the Victorian era, water was often supplied through a network of pipes and fittings that were often made of cast iron and were prone to leakage.

Water is a vital resource, and its supply is under constant threat. In the Victorian era, water was often supplied through a network of pipes and fittings that were often made of cast iron and were prone to leakage.

Water is a vital resource, and its supply is under constant threat. In the Victorian era, water was often supplied through a network of pipes and fittings that were often made of cast iron and were prone to leakage.

Water is a vital resource, and its supply is under constant threat. In the Victorian era, water was often supplied through a network of pipes and fittings that were often made of cast iron and were prone to leakage.

Water is a vital resource, and its supply is under constant threat. In the Victorian era, water was often supplied through a network of pipes and fittings that were often made of cast iron and were prone to leakage.

Water is a vital resource, and its supply is under constant threat. In the Victorian era, water was often supplied through a network of pipes and fittings that were often made of cast iron and were prone to leakage.

Water is a vital resource, and its supply is under constant threat. In the Victorian era, water was often supplied through a network of pipes and fittings that were often made of cast iron and were prone to leakage.



Food Processing & Packaging

Saving energy, reducing emissions



Urban Design & Landscaping Features

In-situ solutions

In the past, a lot of conflicting legislation has led to widespread confusion over remediation and with the latest call for more housing, the focus on brownfield.

In the past, a lot of conflicting legislation has led to widespread confusion over remediation and with the latest call for more housing, the focus on brownfield.

In the past, a lot of conflicting legislation has led to widespread confusion over remediation and with the latest call for more housing, the focus on brownfield.

In the past, a lot of conflicting legislation has led to widespread confusion over remediation and with the latest call for more housing, the focus on brownfield.

In the past, a lot of conflicting legislation has led to widespread confusion over remediation and with the latest call for more housing, the focus on brownfield.

In the past, a lot of conflicting legislation has led to widespread confusion over remediation and with the latest call for more housing, the focus on brownfield.

In the past, a lot of conflicting legislation has led to widespread confusion over remediation and with the latest call for more housing, the focus on brownfield.

Urban Design & Landscaping Features

In-situ solutions

In the past, a lot of conflicting legislation has led to widespread confusion over remediation and with the latest call for more housing, the focus on brownfield.

In the past, a lot of conflicting legislation has led to widespread confusion over remediation and with the latest call for more housing, the focus on brownfield.

In the past, a lot of conflicting legislation has led to widespread confusion over remediation and with the latest call for more housing, the focus on brownfield.

In the past, a lot of conflicting legislation has led to widespread confusion over remediation and with the latest call for more housing, the focus on brownfield.

In the past, a lot of conflicting legislation has led to widespread confusion over remediation and with the latest call for more housing, the focus on brownfield.

In the past, a lot of conflicting legislation has led to widespread confusion over remediation and with the latest call for more housing, the focus on brownfield.

In the past, a lot of conflicting legislation has led to widespread confusion over remediation and with the latest call for more housing, the focus on brownfield.

In the past, a lot of conflicting legislation has led to widespread confusion over remediation and with the latest call for more housing, the focus on brownfield.



DONG energy



Offshore wind farm plans on show

Plans for a wind farm off the East Yorkshire coast are going on display to the public. Dong Energy wants to put up to 78 turbines in the North Sea, five miles (8km) off Spurn Point.



The project would generate electricity for 150,000 homes

Fishermen have spoken of concerns that the farm could pose a threat to their livelihoods. The project is in the area, known as Westernmost Rough.

this is hull and east riding.co.uk

Fishermen fear wind turbines will threaten their livelihoods

3:20 - 07 June 2008
EAST coast fishermen had plans for a second huge offshore wind farm off Spurn Point to drive through their livelihoods.
Hundreds of shallow fishermen from Grimsby, Withernsea and Redding are already protesting from their boats against wind farms.
Spurn Point is a major fishing ground for the area and the distance they have to travel to reach the turbines is a concern.
But when the turbines are up they will be out of the way and the turbines will be a threat to their livelihoods.
Fishermen are concerned that if any more turbines are built in the area it will be a threat to their livelihoods.
The project is putting fishermen at risk and the Government should be aware of this.

YORKSHIRE POST

Fishermen in wind farm clash

Published: 07 June 2008
By Amanda Wood

PLANS for a second massive wind farm off the Yorkshire coast have put fishermen in Britain's worst fishing grounds on a collision course with developers.
Hundreds of shallow fishermen from Grimsby, Withernsea and Redding are already protesting from their boats against wind farms.
Spurn Point is a major fishing ground for the area and the distance they have to travel to reach the turbines is a concern.
But when the turbines are up they will be out of the way and the turbines will be a threat to their livelihoods.
Fishermen are concerned that if any more turbines are built in the area it will be a threat to their livelihoods.
The project is putting fishermen at risk and the Government should be aware of this.

Westernmost Rough

Project details

The project is a major investment in the offshore wind industry. It will generate clean, renewable energy for 150,000 homes. The project is located in the Westernmost Rough, five miles off the coast of Spurn Point. The project will consist of up to 78 wind turbines. The project is a major investment in the offshore wind industry. It will generate clean, renewable energy for 150,000 homes. The project is located in the Westernmost Rough, five miles off the coast of Spurn Point. The project will consist of up to 78 wind turbines.



Eco-town community consultation





eco2

17 April 2008 reNews

bioenergy **7**

REG cooking up power

Eco2 sows the seed for 40MW straw-fired plant

this is scunthorpe.co.uk
At the heart of all things local

Telegraph

Print Story Close Window

NEW EBOM ENERGY PLANT PLAN FOR REGION
Date: 06.03.08

A massive £30-million straw-blending renewable energy plant is planned for the region, which could power up to 65,000 homes. Developers claim it could pump £5-million into North Lincolnshire's agricultural economy and create more than 80 jobs. The futuristic plans, which would bring the best powered biomass...



Weish developer Eco2 is planning a 40MW straw-fired biomass plant. The project will redevelop a site out of use since 1991. Important to involve the local community in the planning process and we would like to hear views before the planning application is submitted. The company filed an application for a similar...

YOUR VIEWS WANTED:
Proposed straw-powered electricity generating plant at Scawby Brook, Brigg

Eco2 is proposing a new era of energy generation at the site of the old sugar beet factory on Scawby Road, on the outskirts of Brigg. The renewable energy plant would use straw from local farms to produce electricity with a low carbon footprint, equivalent to the needs of 65,000 homes. It is important to involve the local community in the planning process and, with this in mind, we would like to hear your views before the planning application is submitted. All views will be considered and where possible, the scheme will be amended to take on-board your suggestions or help alleviate concerns. We are therefore arranging a public exhibition where the plans for Brigg Renewable Energy Plant will be on display.

The Angel Suite, Angel Hotel
Market Place, Brigg
Friday April 25
from 5:30pm to 9:00pm
Saturday April 26
from 10:00am to 5:00pm

As a company, we believe in being transparent and answering any questions you may have about the project in an open and honest way. We look forward to hearing your views.

www.briggrecp.co.uk

Rasen Mail
WORLD'S BIGGEST STRAW BURNER BRINGS 80 JOBS

Youngs Garage (Tealby) Ltd
Rasen Road, Tealby, Market Rasen, Lincs. NG16 3DQ
MOTOR ENGINEERS
Established 40 years

Mistral
winds of change

Some of our business and environment experience



Clients	Service provided
Envirowise	National media relations
Faversham House – Sustainability <i>live!</i> 2007 & 2008	Event publicity & trade media relations
Weston Otmoor Eco-town	Community consultation and media relations
International Power Marine Developments Ltd	Community consultation and corporate public relations
DBERR (DTI)	'It's only natural' campaign & securing national print & broadcast coverage for series of sector scoreboards
Oxfordshire Climate Change Communications Partnership	Integrated communications strategy
Natural England - Relaunch of 'The Countryside Code'	Marketing strategy, branding toolkit and development of a fully integrated marketing plan



Other relevant experience

Clients	Service provided
CABI Bioscience - Invasive Species Management	National & specialist media relations
MAFF's Codes of Good Agricultural Practice for the protection of Water, Soil and Air	Campaign comprising media relations, speaker opportunities and development of education packs
National Grid	National and regional media campaigns to forge better relationships with local land-owners and the rural communities
RMC Aggregates	Launched first ever environmental report Community and employee relations
WDA	Communications strategy and implementation of 'Return to Wales' campaign
Western Power Distribution	Strategic reputation building to support takeover bid for Hyder
Enviros Aspinwall	Integrated marketing communications strategy to raise company profile



The Mistral Way

- Integrated communications service
- Strategy development to programme implementation
- Deep sector-specific knowledge and experience
- Ability to work with you across the UK through the EnviroConnect network
- Creating a climate in which you can do business



Don't just take our word for it...

Chartered Institute of Public Relations PRide Awards 2007



- Crisis communications – Gold
- Community relations – Gold
- Outstanding Young Communicator – Silver



For further information...

Contact:

Mike Evans
Mistral Group
Staplehurst Office Centre
Weston on the Green
Oxfordshire
OX25 3QU

Tel: 01869 352 721

Email: mike.evans@mistral-pr.co.uk

**Mistral**
winds of change